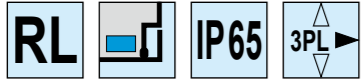


MS899

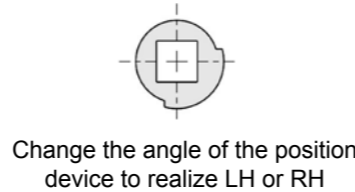
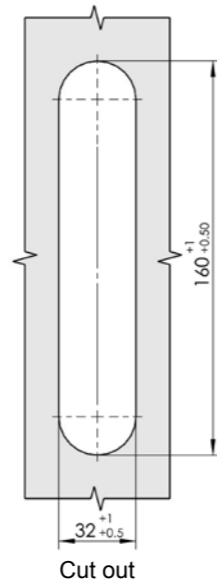
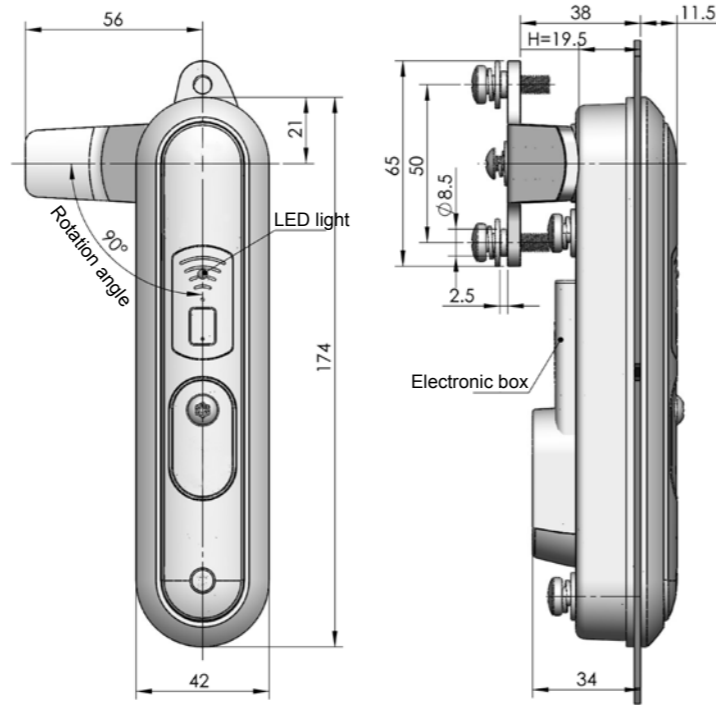


Main material and finish: Black painted (high salt mist resistant) ZDC housing, handle, stainless steel cam

Application: Handle quarter-turn, one-way locked stroke is 25mm, 3 point locked, without changing the structure, you can open the door either RH or LH by changing the direction of the position device, changing the part of electronic box, the electronic lock can become the mechanism lock, the electronic lock has function of IC card and route control

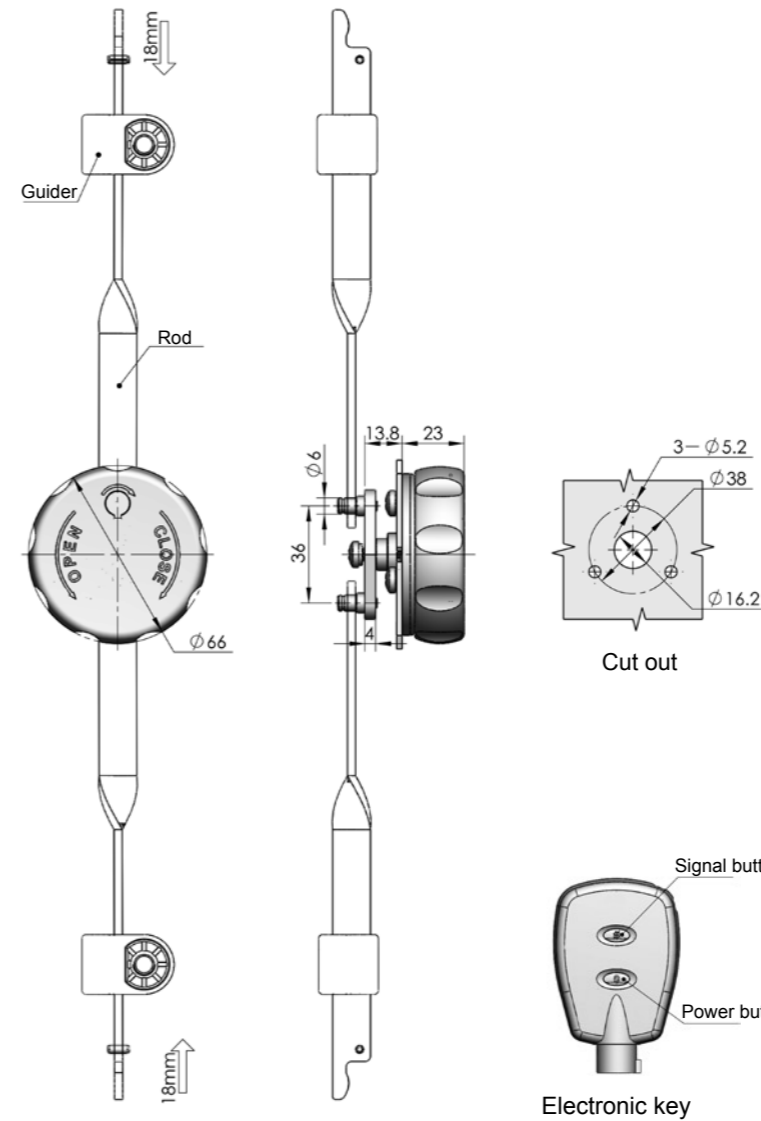
Remarks: Default cylinder TC03-5

Default cam: 2888648001



Remarks: Instruction see MS864-8 on catalogue

	Electronic lock	Mechanism lock
ERP	MS899Z2EE03002	MS899Z2EE03001



The Simple Handhold Electronic Key Instruction:

- 1, Push "*" key to switch on the electronic key. The red light will light every second.
- 2, Push "#" key to deliver the open signal. The red and green light will blink rapidly.
- 3, The handhold electronic key locate to the electronic insert. After the verification is correct, the key can drive the electronic insert rotation with some force. Meanwhile the red light will blink slow down, If the verification is incorrect, the handhold electronic key can't open the electronic insert.
- 4, When you want to switch off the electronic key, you can push "*" key again returning the open state. The red will light every second, then it will be closed automatically in 10 seconds. If you don't push the key, the red light will keep blinking in the open lock situation, 10 seconds later to close automatically

ERP MS901Z2B000001

Remarks: Cam cutout square 8mm

MS901



Main material and finish: Gray nanometer painted ZDC housing, button, white zinc-plated steel cam and rod

Application: For more details, see the instruction with the product

Remarks: With special electronic key

MS864-8

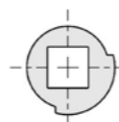
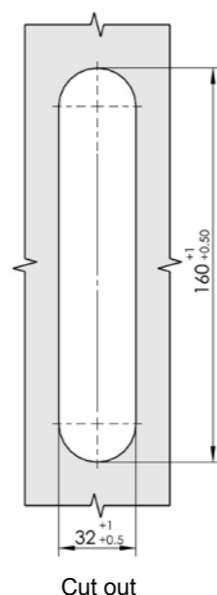
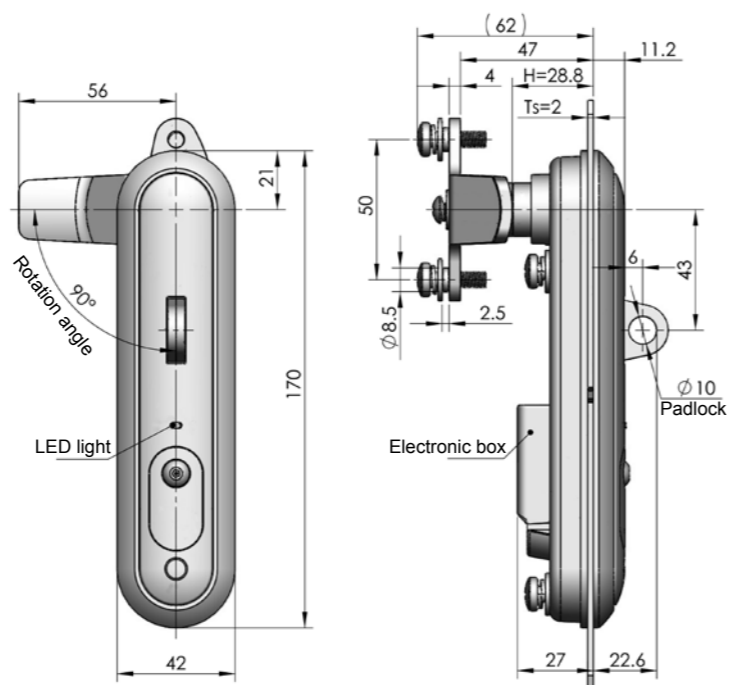


Main material and finish: Black painted (high salt mist resistant) ZDC housing, handle, stainless steel cam

Application: Handle quarter-turn, one-way locked stroke is 22mm, 3 point locked, without changing the structure, you can open the door either RH or LH by changing the direction of the position device, changing the part of electronic box, the electronic lock can become the mechanism lock

Remarks: Default key K043

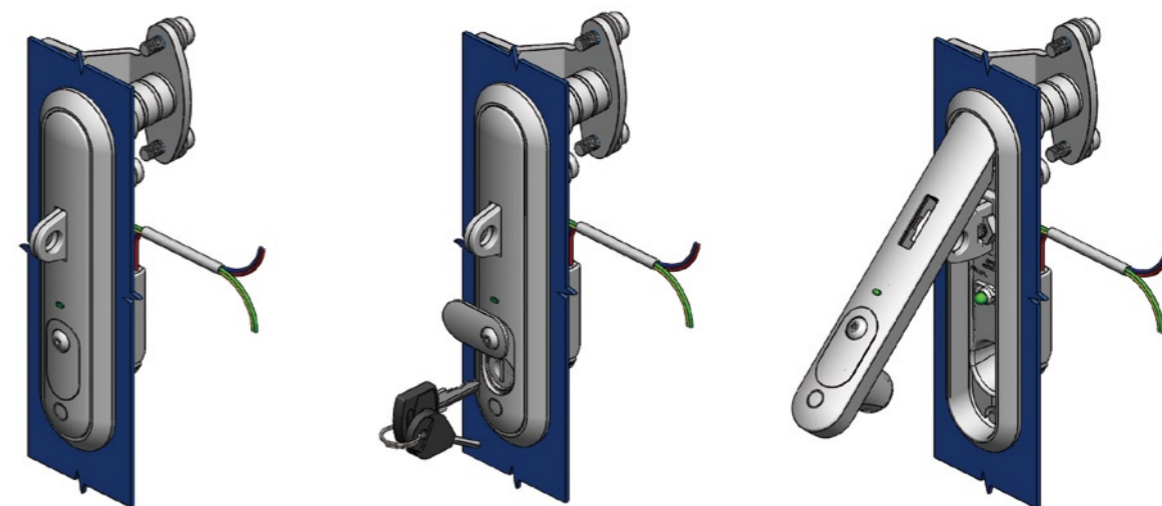
Default cam: 2888648001



Change the angle of the position device to realize LH or RH

Electronic Lock Instruction:

When power on, the green signal starts to shine and the handle is not opened (if power off in this time, the lock can be locked automatically). Push the circular position on swinghandle, the swing handle will bounce from lock body to realize the open function. The power will keep on for 30 seconds. (The time can be set by the customers and we suggest that no longer than 1 min). While you press the swing handle down into the lock body, the power is also cut off to realize the locked function. If there is an accident(for example: remote control is failed, power line is burned and so on) which is supplied without power, please use the mechanism opening method. The open method of mechanism lock: using the special tool to rotate the pentagonal screw and open the dust proof cover, then open the insert by key (the swing handle will bounce to open).
Electronic box instruction: Input voltage rating 12V-24V, current rating 200mA~300mA/DC. Red line: positive, Blue line: negative, Green and yellow: signal line.



Close Mechanical open Open when supply with powder

Assemble Requirement:

In the assembling process, the operator should wear gloves and not hammer the lock to avoid any possible damage to lock accessories. Make sure the door is horizontal when assembling. The fix hole on frame matches with the shape of lock. Do not hammer the lock and clear the surface of the lock by using chemical material to avoid corrosion the coating. After assembling, the lock should be horizontal to the door and vertical to the ground. The gaps between the lock and the cut out can reach waterproof IPX6 without being filled in with any glue.

ERP					
Electronic lock			Mechanism lock		
Support	With padlock	Without padlock	Support	With padlock	Without padlock
Metal support	MS864Z2E052019	MS864Z2E052017	Metal support	MS864Z2E052003	MS864Z2E052001
PA support	MS864Z2E052020	MS864Z2E052018	PA support	MS864Z2E052004	MS864Z2E052002