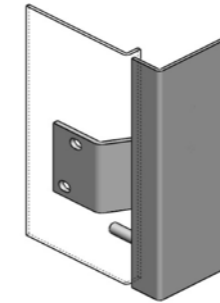
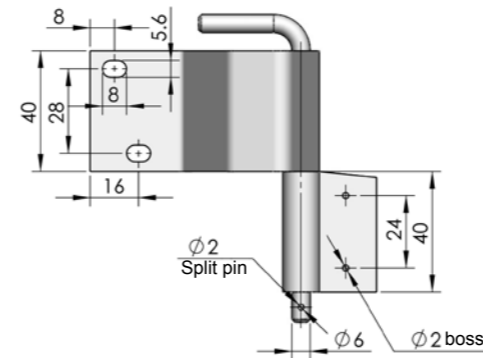
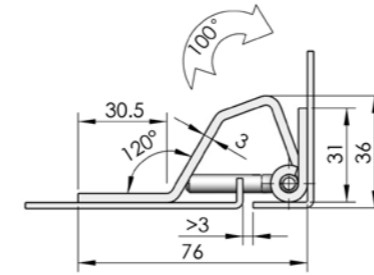
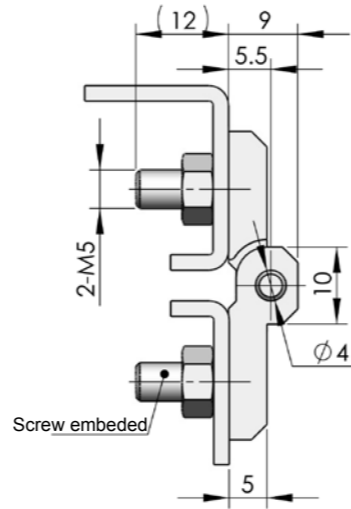
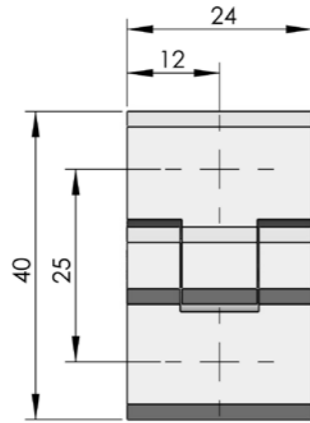


**CL226-6A**



**Main material and finish:** Black powder coated ZDC hinge, nickel-plated steel shaft  
**Application:** Opening angle 180°



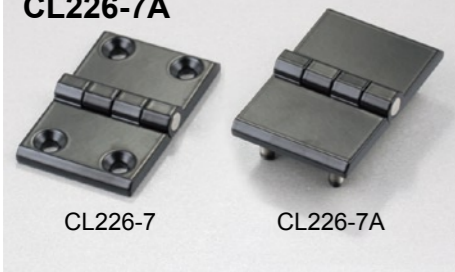
ERP

CL226Z1A026

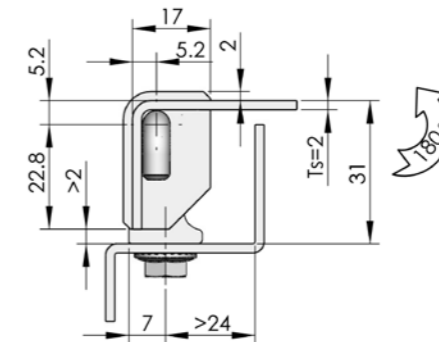
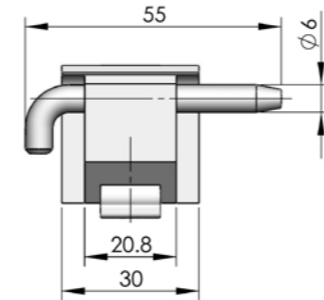
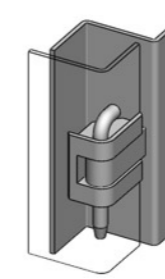
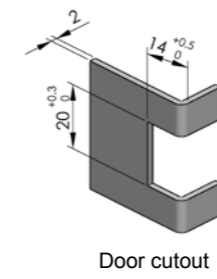
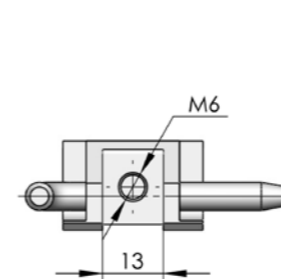
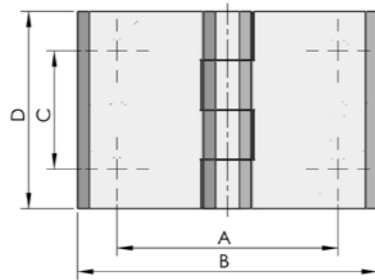
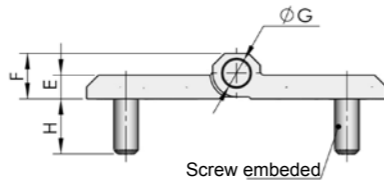
ERP

CL229F3D001

**CL226-7  
CL226-7A**



**Main material and finish:** Black powder coated ZDC hinge, nickel-plated steel pin  
**Application:** Opening angle 180°



ERP	Specification								Remarks
	A	B	C	D	E	F	G	H	
CL226Z1A028	56	76	30	50	6	11.5	6		Ø6.3 Countersunk hole, ZDC
CL226Z1A029	56	76	30	50	6	11.5	6	12.5	M6 Screw embedded, ZDC
CL226Z1A034	88	120	36	60	8	15	8		Ø6.8 Countersunk hole, ZDC
CL226Z1A030	88	120	36	60	8	15	8	16.5	M8 Screw embedded, ZDC

Remarks: Nylon pin optional, details refer to CL230

ERP

CL230Z1A026

**CL229**



**Main material and finish:** White zinc-plated steel hinge  
**Application:** Opening angle 180°

**CL230-3**



**Main material and finish:** Black powder coated ZDC hinge, nickel-plated steel pin  
**Application:** Opening angle 180°